



SUN

SOUTHERN
UNIVERSITIES
NETWORK

PATHWAYS TO LEVEL 4 AND BEYOND

PATHWAYS TO LEVEL 4 AND BEYOND



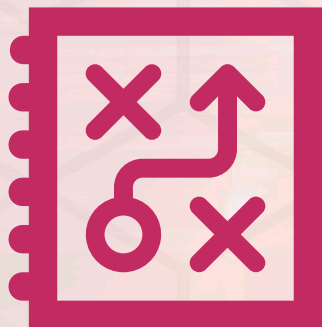
SUN SOUTHERN
UNIVERSITIES
NETWORK

EXPLORING EDUCATION OPTIONS FOR YOUNG PEOPLE

Online CPD Opportunity for Organisations
working with Young People

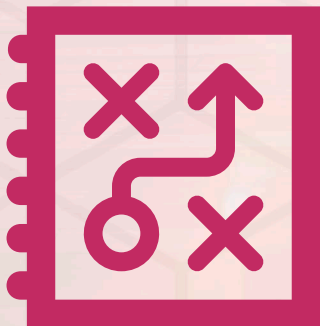
TODAY AIMS TO:

**INTRODUCE YOU TO THE DIFFERENT
EDUCATIONAL OPPORTUNITIES
AVAILABLE TO YOUNG PEOPLE
AT LEVEL 3 AND 4**



TODAY AIMS TO:

**INCREASE YOUR CONFIDENCE WHEN
TALKING TO YOUNG PEOPLE ABOUT
THEIR FUTURE OPTIONS**



THIS SERIES IS NOT GOING TO:



**MAKE YOU A CAREERS
ADVISOR**



**CONTAIN THE ANSWERS TO
EVERY QUESTION THAT A
YOUNG PERSON MAY ASK
YOU**

SUN

SOUTHERN
UNIVERSITIES
NETWORK

Level 3 Options

Qualification
Types

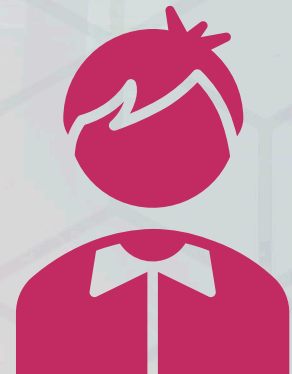
Level 3
Qualifications

Level 3
Providers

ACTIVITY: MY YOUNG PERSON THEIR NEXT STEPS

Who are the young people that you work with?

- What are their skills/aspirations?
- What are their biggest barriers to progression?
- What may concern them in their next steps?



LEVEL 3 OPTIONS

Academic

Academic

- Classroom and theory based
- Involve studying a variety of different subject areas

Vocational

Vocational

- Designed to help you learn in a practical way about a specific job area
- Include a significant amount of classroom-based activities
- Assessment is usually by both written and practical examinations

Work-based

Work-based

- Qualifications learnt whilst gaining real lifework experience
- Often assessed through an EPortfolio as well as a final end-point assessment

Sixth Forms

Sixth Forms

- Sixth form represents the final 2 years of secondary education
- Sixth forms tend to focus on academic subjects such as A-Levels and BTECs
- Sixth forms are often based at schools, acting as year 12&13

Colleges

Colleges

- Colleges often offer a much wider range of courses at different levels including an opportunity to retake level 2 qualifications
- College is a less structured environment to be able to effectively house a range of students whose time at the college will vary
- Being independent from schools, colleges have greater provision to take non-traditional students who may not be coming directly from school

Training Providers

Training Providers

- Training providers offer a work-related training and qualifications such as NVQs and Apprenticeships
- They are often much smaller institutions than Sixth Forms or Colleges but can offer more specialised training

LEVEL 3 OPTIONS

A and AS levels

A and AS Levels

- These are academic qualifications
- Graded on an A*- E system
- Since 2018 all A Levels are delivered across two years with AS Levels now being a separate one year qualification
 - There is no longer a link between AS and A-Levels
- Assessment will now be mainly exam-based, with exams no longer taking place in January

Advanced apprenticeship

Advanced Apprenticeship

- Work-based qualification
- Will be based in a workplace but will have an associated college or training provider
- Earn a wage at the same time as learning
- An advanced apprenticeship is considered to be the same level as two A Levels

NVQ Level 3

NVQ Level 3

- Work-based qualification
- Can take place at a college or in a workplace
- An NVQ at level 3 is roughly the equivalent of two A-Levels
- Assessed by testing student skills in the workplace

BTEC

BTEC

- Vocational qualifications
- BTECs focus on an area of one of 16 industry sectors
- BTECs may suit young people who are keen to learn about a particular industry or subject but don't want to rule out higher education
- Assessed through both practical and written work

T Levels

T Levels

- Vocational qualifications
- 2-year courses
- Mixture of classroom learning and approximately 45 days of 'on-the-job' learning

LEVEL 2 ENGLISH & MATHS

Students must study Level 2 English and Maths if:

- They are aged 16 to 18 **Or** 19 to 25 EHCP
- They do not hold a GCSE grade 9 to 4, A* to C
- They are doing a programme of 150 hours or more

LEVEL 2 ENGLISH & MATHS

Which qualifications can be taken?

Students can receive funding to do either:

- GCSEs
- ‘Stepping stone’ qualifications
 - Functional skills at Level 2 and below.
 - English for speakers of other languages (ESOL)
 - other qualifications nominated by institutions and approved by the DfE

ACTIVITY: MYTHBUSTERS

LEVEL 3 QUALIFICATIONS

True or False?

BTEC students don't progress to university



FALSE!

One in four students who got into university in the UK did so with a BTEC

True or False?

Apprenticeships can only be done at this level



FALSE!

Apprenticeships can be done all the way up to level 7 – the same as a masters degree

True or False?

A Levels are the most popular choice for Level 3



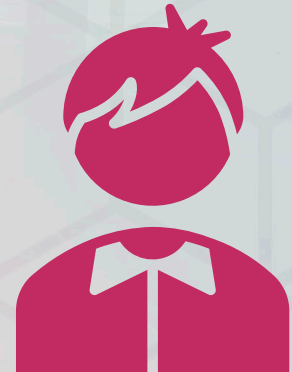
TRUE!

There are roughly 800,000 A-Level entrants every year

ACTIVITY: MY YOUNG PERSON THEIR NEXT STEPS

What would your young person think about Level 3 Options?

- Which options might they consider?
- Which provider might suit them?
- What might be useful for them to know?





SUN

SOUTHERN
UNIVERSITIES
NETWORK

Level 4 Options

Level 4
Qualifications

Level 4
Funding

LEVEL 4 OPTIONS

Honours Degree (Year 1)

Honours Degree

- A Degree is a 3-4 year course which begins at Level 4
- There is a huge range of degree courses available
- The assessment of each degree course can differ dramatically
- Some job roles require a degree (e.g. Teaching, Medicine)

Higher National Certificate (HNC)

HNC

- A HNC is a 1 year vocational option for Higher Education
- Focused on a specific job role
- A HNC is better suited for students wanting to pursue a specific career and who prefer practical teaching and learning

Foundation Degree (year 1)

Foundation Degree

- A foundation degree is a combined academic and vocational qualification
- Usually take two years
- They must include a pathway for students to progress to an honours degree
- Often developed in coordination with employers

Higher Apprenticeship

Higher Apprenticeship

- A higher apprenticeship follows the general apprenticeship pattern of Work+Earn+Learn
- They are based in an industry with some time spent at a college or training provider
- Higher apprenticeships can vary in length, between 1-4 years

NVQ Level 4

NVQ Level 4

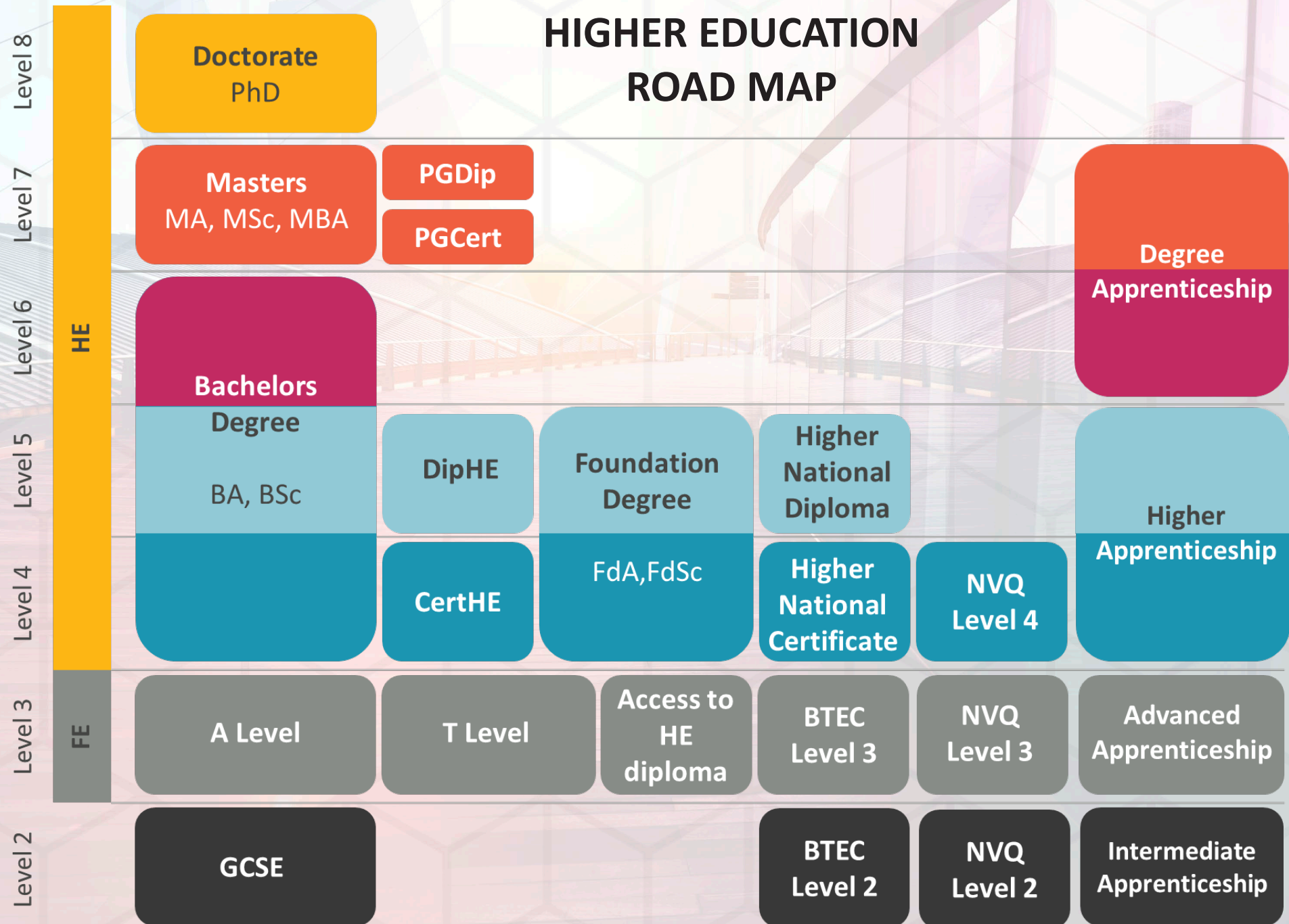
- Similar to NVQ at Level 3
- Work-based qualification
- Assessment based on the students in-work skills

Certificate of higher Education (Cert HE)

CertHE

- Covers 1 year of HE study
- These courses usually have lower entry requirements
- Can be used as an introduction into a subject at HE level
- Often recommended for those who have been out of education
- Can be awarded to students who drop out of an Honours degree

HIGHER EDUCATION ROAD MAP



LEVEL 4 PROVIDERS

Training Providers

Training Providers

- Training providers tend to offer work-related training and qualifications such as NVQs and Apprenticeships
- Larger organisations offering apprenticeships may have their own training provider such as

Colleges

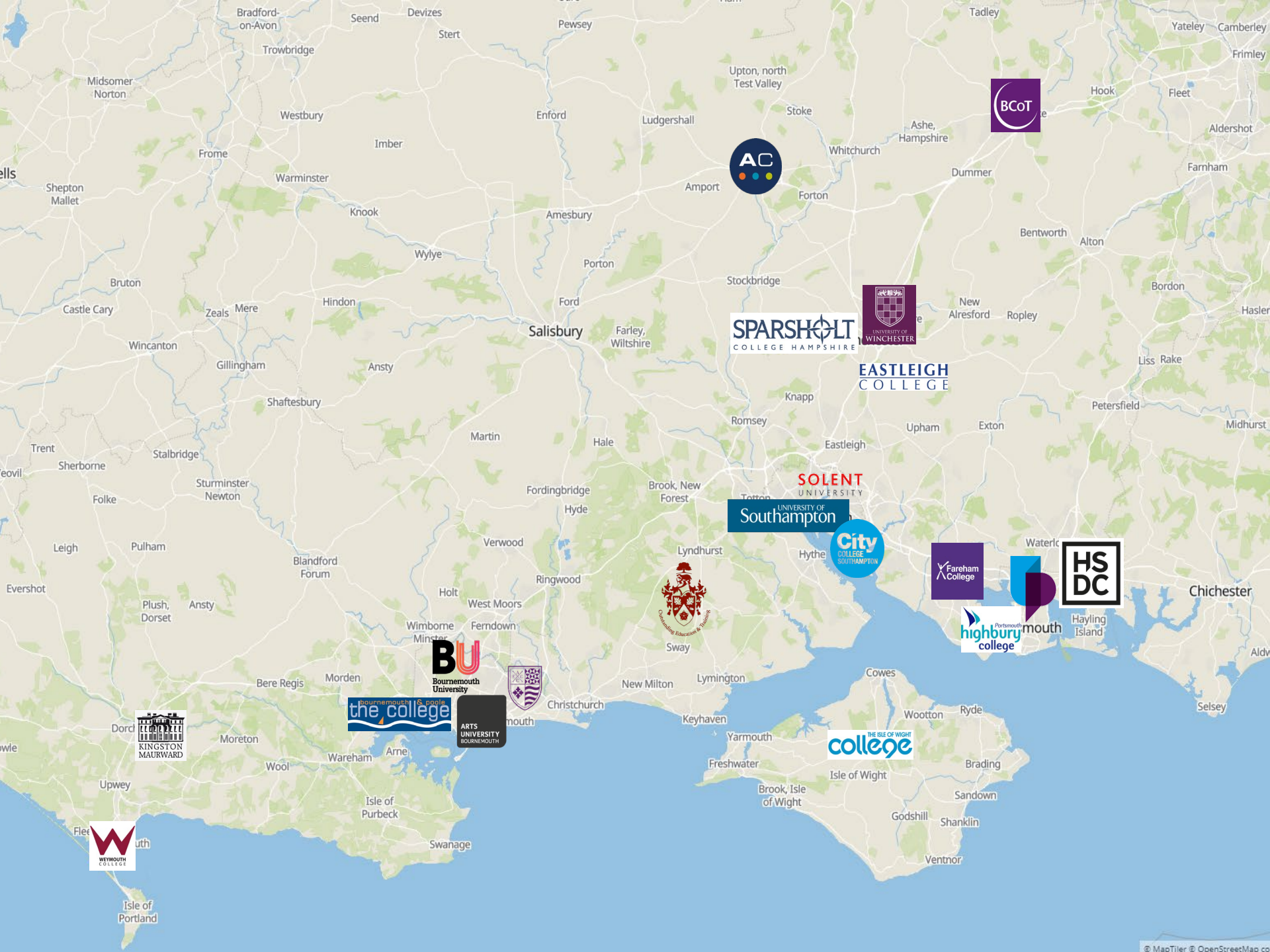
Colleges

- Colleges tend to host a broader range of qualification types, including both academic, vocational and work-based options

Universities

Universities

- Universities will mostly host academic qualifications at HE level
- Universities may also host or accredit level 4 qualifications at other institutions
- There are 7 Universities in Dorset and Hampshire



FUNDING FOR LEVEL 4 STUDY

UNIVERSITY STUDENT FINANCE

Tuition fee loan and maintenance loan to cover the following qualifications:

- A first degree, for example BA, BSc or BEd
- A Foundation Degree
- A Certificate of Higher Education
- A Diploma of Higher Education (DipHE)
- A Higher National Certificate (HNC)
- A Higher National Diploma (HND)
- An Initial Teacher Training course
- An Integrated Master's Degree
- A pre-registration Postgraduate Healthcare course

SUBJECT TO CHANGE

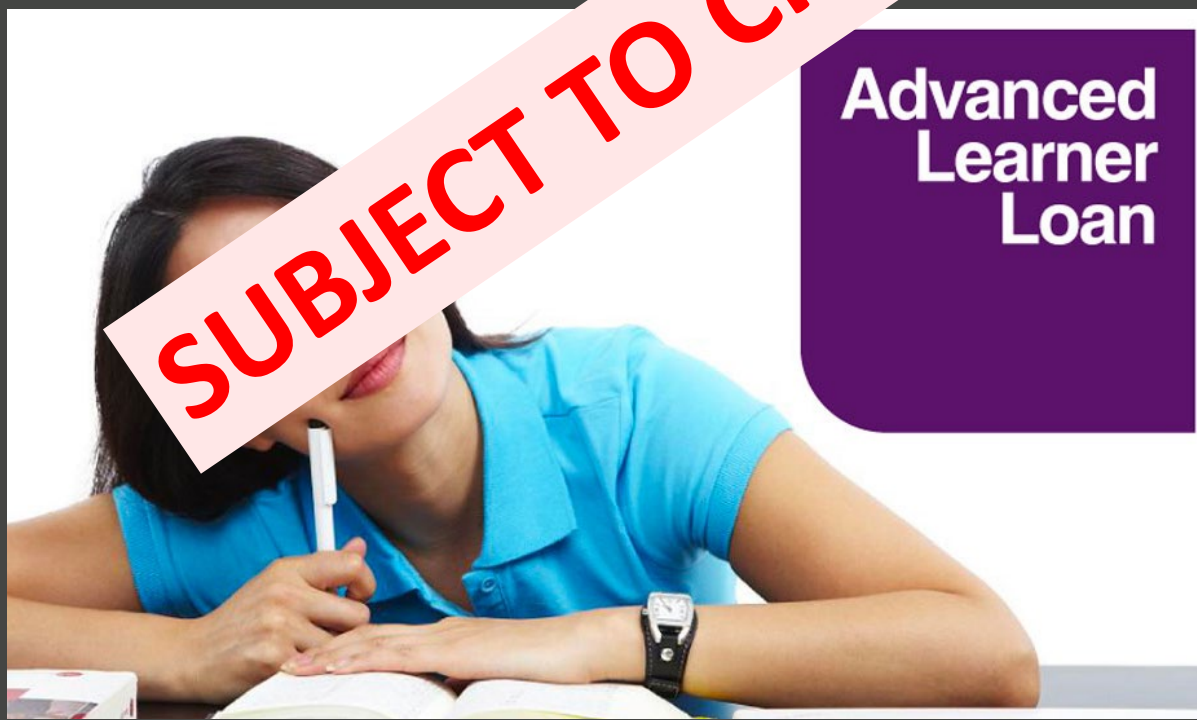
Apply early,
even if
undecided!

studentfinance
england

FUNDING FOR LEVEL 4 STUDY

ADVANCED LEARNER LOAN

- Tuition fee cover for a range of Level 3 and 4 courses at an approved college or training provider
- The participant must be 19 or older on the first day of the course
- If an advanced learner loan is taken out on an Access to HE course and the participant completes a HE course then ALL the outstanding balance is wiped
- There is an Advanced Learner Loan Bursary available in some cases to cover things like childcare costs
 - This is managed by each institution and is applied to through them



SUBJECT TO CHANGE

**Advanced
Learner
Loan**

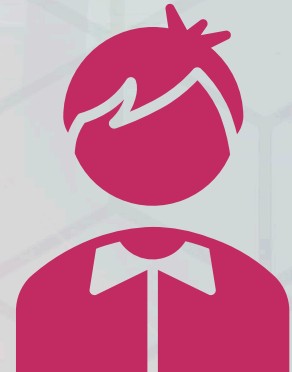
ACTIVITY: MY YOUNG PERSON THEIR NEXT STEPS

What would your young person think about Level 4 Options?

Which options might they consider?

Which provider might suit them?

What might be useful for them to know?



Careerpilot



UCAS



USEFUL SIGNPOSTING

OUTREACH & ACCESS ACTIVITY

CAMPUS VISITS

WORKSHOPS



UNIVERSITIES



A more bespoke overview of the support available at each institution can be found in the university's student services department and on the university website



CONTEXTUAL
ADMISSIONS

FINANCIAL SUPPORT



SUN ACTIVITY



FESTIVALS OF
INDUSTRIES

RESIDENTIALS

WORKSHOPS

REVISION DAYS

THIRD PARTY
ORGANISATIONS

WEBSITE & RESOURCES

SPOCs & PROGRESSION
MENTORS in Schools &
Colleges

CPD



FUTURE STEPS





www.sunoutreach.org



Southern Universities Network



@SUN_Admin



southern_universities_network